

Santa Clara Datacenter Specifications

3080 Raymond St. Santa Clara, CA 95054

(408)450-5740 www.layer42.net



Powerware



Honeywell



Electrical System

- 2MW Caterpillar Generator
- 3000 Gallons of Diesel fuel
- Double Ended 3000A IEM Switchgear
- 4 Eaton Powerware 9315 500KVA UPS Modules
- PDI PDUs with Branch Circuit Power Monitoring
- All Power Systems are in a N+1 or Greater



Cooling and Fire Suppression

- Data Aire CRAC unites
- 450 Ton Chilled Water system
- VESDA Smoke Detectors
- Heat Detectors
- Laser Grid Smoke Detection
- Double Interlock Dry Pipe Pre-action System



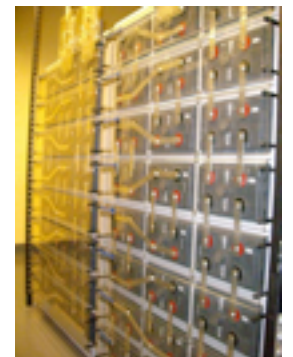
Building Management Systems and Security

- Fully Staffed 24x7x365
- Honeywell Building Security System
- Biometric Access Controls
- All doors monitored and alarmed
- Camera System with Digital Storage
- Invensys Building Management System
- Local and Remote monitoring of all building systems



Available Services

- Private Cages with Biometric Access Control
- Locking Cabinets
- Remote Hands
- Redundant Power Feeds
- Redundant Network Feeds



Network and Fiber

- 2 Underground building entrances
- Cross connects available to all major Bay Area Datacenters
- On Net Carriers: Layer42, Qwest, Level3, SVP, Abovenet, AT&T, XO Communications, Fiber Internet Center, Applied Operations
- NPA-NXX: 408-450